

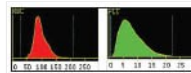


Cat. No.: G-DC5D
CE reg. no.: HU/CA01/10229/09



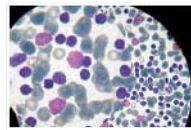
The auto hematology analyzer is a quantitative, automated hematology analyzer and 5-part differential counter for In Vitro Diagnostic Use in clinical laboratories. The analyzer is used for the quantitative determination of the 27 parameters, 2 histograms and 2 scattergrams.

Advanced multi-technology platform ensures accurate results



Traditional Technology for the Basic Parameters

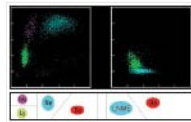
Enumeration and sizing of red blood cells and platelets with the proven impedance method. Environmental friendly cyanide free hemoglobin reagent.



Improved Flagging Algorithm

Highly sophisticated software to distinguish between normal and abnormal samples.

The instrument informs the user about the presence of abnormal or suspicious cell populations. The abnormal populations are further identified as atypical lymphocytes, large immature cells, giant platelets, or platelet clumps.



Utilizing the Latest Technology for WBC differentiation

The D-cell 5D hematology analyzer utilizes a long lasting semiconductor laser light source with a unique dual acceleration flow cell technology. Combining the high precision optical structure with cytochemical staining method the instrument provides best-in-class leukocyte differentiation.

Technical Specifications

Principles: Electrical resistance for counting RBC and PLT and STF method for hemoglobin Flow Cytometry (FCM)+Laser light scatter for WBC differential analysis

Parameters: WBC, Lym#, Mon#, Neu#, Bas#, Eos#, Lym%, Mon%, Neu%, Bas%, Eos%, RBC, HGB, HCT, MCV, MCHC, RDW-SD, PLT, MPV, PDW, PCT.4 Research parameters includes IMM#, IMM%, ATL#, ATL%

2 histograms for RBC and PLT

2 scatter grams: Basophils Scatter grams,

4 differential Scatter grams

Performance

Parameter	LinearityRange
WBC (10^9 /L)	1.00–99.99
RBC (10^{12} /L)	0.30–10.00
HGB (g/L)	1–300
PLT (10^9 /L)	10–1000

Sample Volume: Prediluted 10uL

Manual mode (Open sampling): 120uL

Auto loader/Manual mode(Closed tube): 180uL

Throughput: Up to 80 samples per hour

Display :10,4 inch TFT Touch Screen Resolution: 800x600 px

Menu: Count, Review, QC, Setup, Service, Calibration, Logout, Shutdown Carry Over WBC, RBC, HGB, HCT<0.5%, PLT<1.0%

Interface: USB, LAN

Printout: External Laser Printer/Inkjet Printer, various printout formats

Operating Environment: Temperature: 15–30C; Humidity: 30–85%

Power Requirement: Main Unit: A.C. 100–240V, 50/60 Hz; Compressor: A.C. 100V/115V, 50/60 Hz A.C. 220V/230V, 50/60 Hz

Dimension and Weight

	Main Unit	Compressor	Sample Loader (optional)
Lenght (mm)	660	420	520
Width (mm)	600	310	235
Height (mm)	583	435	90
Weight (Kg)	73	23	6.1